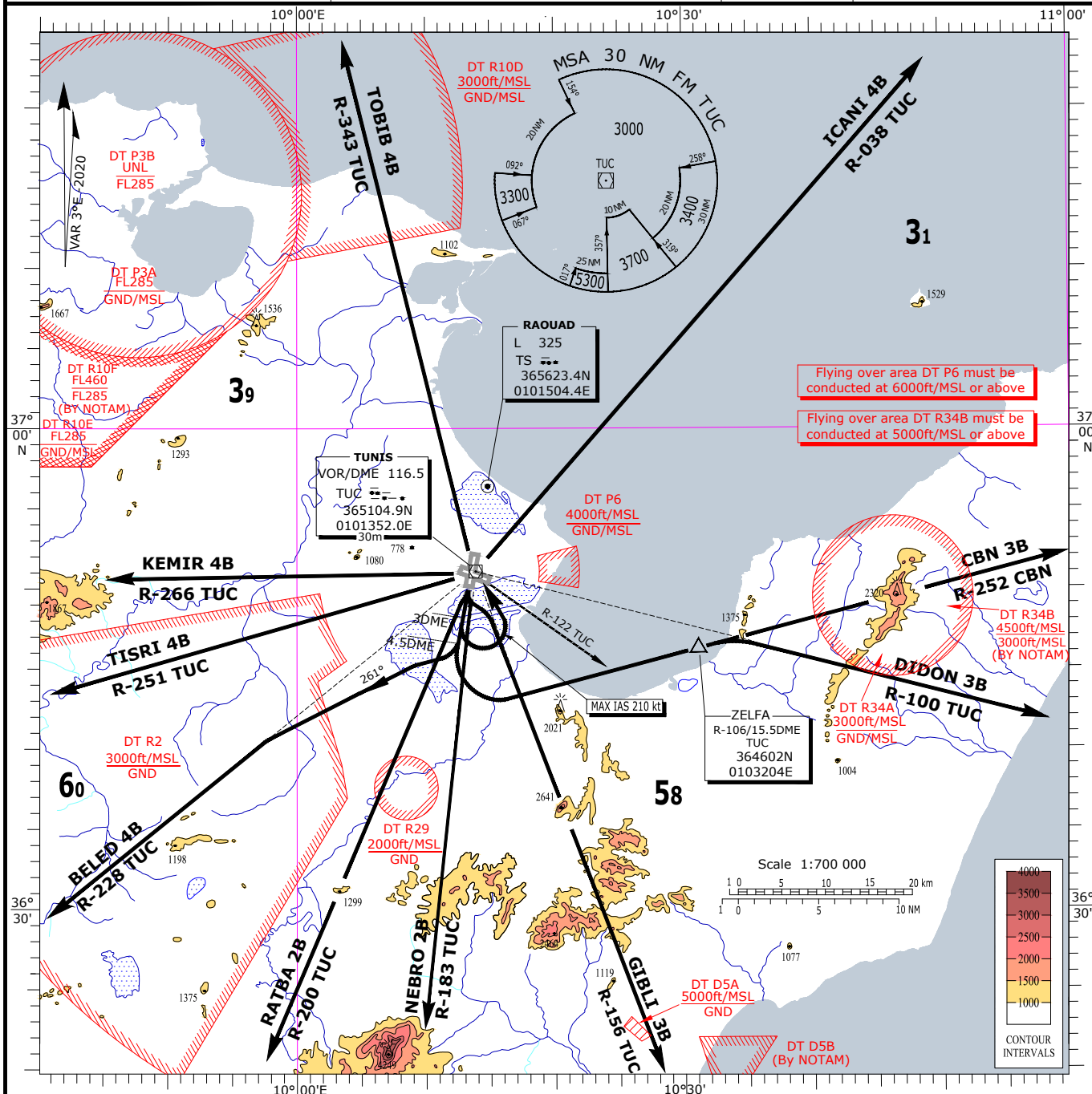


STANDARD DEPARTURE CHART
INSTRUMENT (SID) - ICAOTRANSITION ALTITUDE 6000 ft
BEARINGS AND TRACKS ARE MAGNETIC
ELEVATION AND ALTITUDE IN ftTWR 118.1
APP 121.2TUNIS-Carthage
SID RWY 19

SID RWY 19	ROUTING	REMARKS
TOBIB 4B	After take off, climb straight ahead. At 3 DME TUC, turn left to TUC VOR (Do not overshoot R-122 TUC, MAX IAS 210 Kt, cross TUC VOR at 3000 ft or above).Follow R-343 TUC to TOBIB.	-Minimum climb gradient = 365ft/NM (slope 6%) until 3000ft. If unable to comply advise ATC
ICANI 4B	After take off, climb straight ahead. At 3 DME TUC,turn left to TUC VOR (Do not overshoot R-122 TUC, MAX IAS 210 Kt, cross TUC VOR at 3000 ft or above). Follow R-038 TUC to ICANI.	
CBN 3B	After take off, climb straight ahead. At 2500ft or 4.5 DME TUC (whichever is first), turn left to intercept R-252 inbound to CBN VOR.	
DIDON 3B	After take off, climb straight ahead. At 2500ft or 4.5 DME TUC (whichever is first),turn left to intercept R-252 inbound to CBN VOR. At ZELFA (intersection R-106 /15.5 DME TUC), turn right to follow R-100 TUC VOR to DIDON.	-MAX IAS 250kt below FL 100
GIBLI 3B	After take off, as soon as possible, turn left to intercept and follow R-156 TUC VOR to GIBLI.	-Noise abatement procedures : See subsection DTTA AD 2.21
NEBRO 2B	After take off, as soon as possible, turn left to intercept and follow R-183 TUC VOR to NEBRO.	
RATBA 2B	After take off, as soon as possible, turn right to intercept and follow R-200 TUC VOR to RATBA.	-No turn permitted below 500 ft
BELED 4B	After take off, climb straight ahead. At 4.5 DME TUC, turn right, track 261° to intercept and follow R-228 TUC VOR to BELED.	
TISRI 4B	After take off, climb straight ahead. At 3 DME TUC , turn left to TUC VOR (Do not overshoot R-122 TUC, MAX IAS 210kt, cross TUC VOR at 3000ft or above). Follow R-251 TUC VOR to TISRI.	
KEMIR 4B	After take off, climb straight ahead. At 3 DME TUC, turn left to TUC VOR (Do not overshoot R-122 TUC , MAX IAS 210kt, cross TUC VOR at 3000ft or above). Follow R-266 TUC VOR to KEMIR.	